

**30X60cm**

Vitrified Body

Wall Tiles



**GVT Series**

R9 Surface

R11 Surface

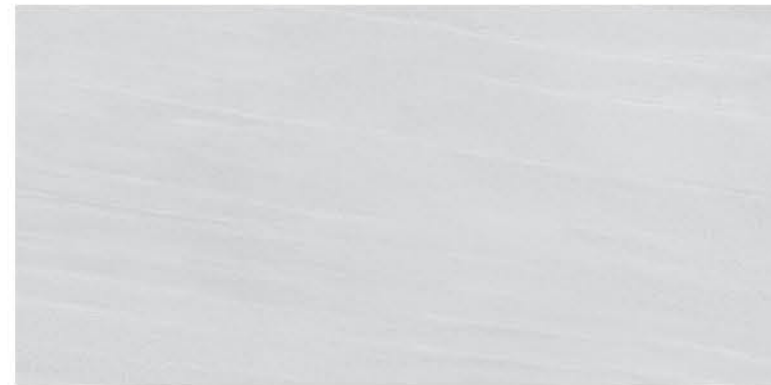
Sugar Surface





# GVT (MATT)

30x60cm



9011-LT



9011-DK





# GVT (MATT)

30x60cm



9027-LT



9027-DK





# GVT (MATT)

30x60cm



9031-LT



9031-DK





# GVT (MATT)

30x60cm



9038-LT



9038-WAVE-HL-A



9038-WAVE-HL-B



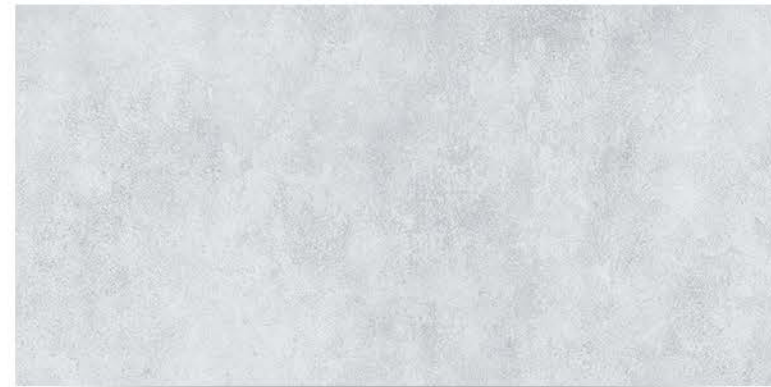
9038-DK





# GVT (MATT)

30x60cm



9041-LT



9041-WAVE-HL-A



9041-WAVE-HL-B



9041-DK





# GVT (MATT)

30x60cm



9042-LT



9042-DK





# GVT (MATT)

30x60cm



9043-LT



9044-DK





# GVT (MATT)

30x60cm



9046-LT



9046-DK





# GVT (MATT)

30x60cm



9047-LT



9047-DK



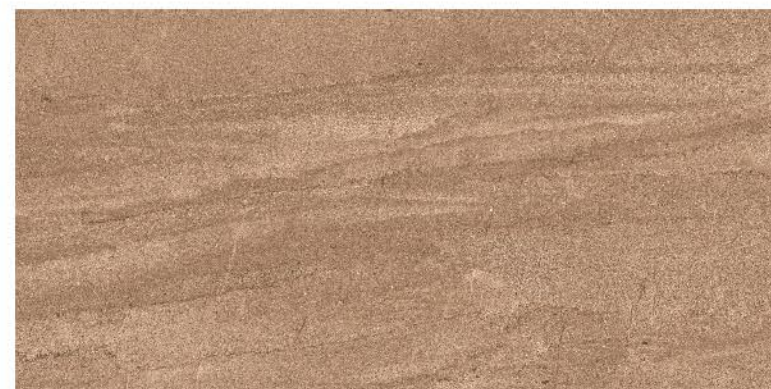


# GVT (MATT)

30x60cm



9048-LT



9048-DK





# GVT (MATT)

30x60cm



9049-LT



9049-DK





# GVT (MATT)

30x60cm



9050-LT



9050-DK





# GVT (MATT)

30x60cm



9051-LT



9051-DK





# GVT (MATT)

30x60cm



9052-LT



9052-DK





# GVT (MATT)

30x60cm



9055-LT



9055-DK





# GVT (MATT)

30x60cm



9056-LT



9056-DK





# GVT (MATT)

30x60cm



9060-LT



9060-DK





# GVT (MATT)

30x60cm



9062-LT



9062-DK



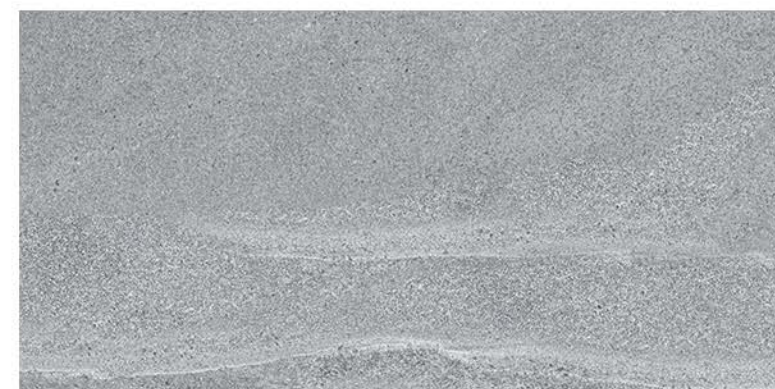


# GVT (MATT)

30x60cm



9063-LT



9063-DK



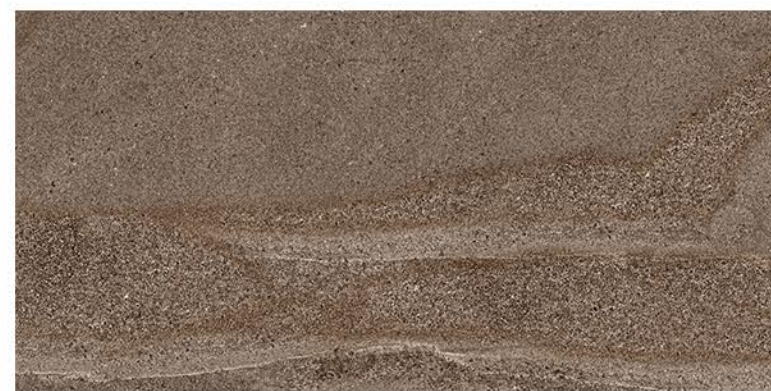


# GVT (MATT)

30x60cm



9064-LT



9064-DK





# GVT (MATT)

30x60cm



9065-DK



9065-HL





# GVT (MATT)

30x60cm



9070-LT



9070-DK





# GVT (MATT)

30x60cm



9072-LT



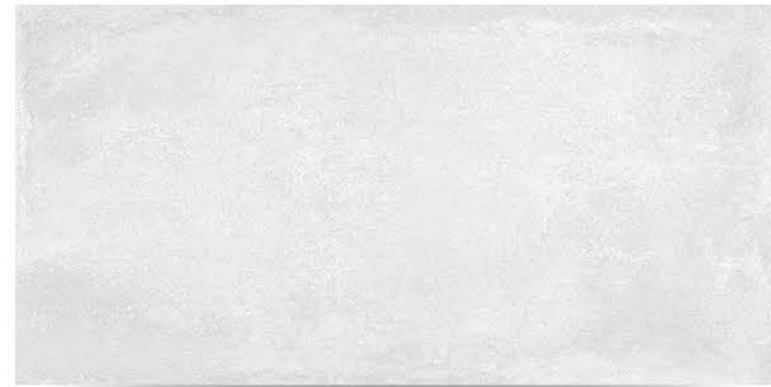
9072-DK



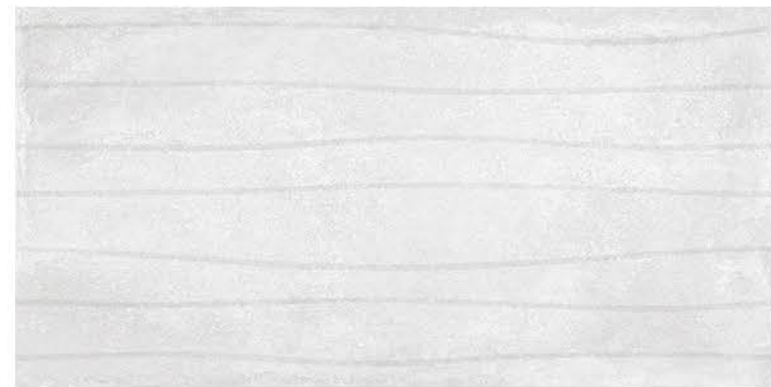


# GVT (MATT)

30x60cm



9079-LT



9079-HL-A



9079-HL-B



9079-DK





# GVT (MATT)

30x60cm



9080-LT



9080-DK





# GVT (MATT)

30x60cm



9081-LT



9081-HL-A



9081-HL-B



9081-DK





# GVT (MATT)

30x60cm



9082-LT



9082-HL-A



9082-HL-B



9082-DK





# GVT (MATT)

30x60cm



9085-LT



9086-DK





# GVT (MATT)

30x60cm



9094-DK



9094-HL



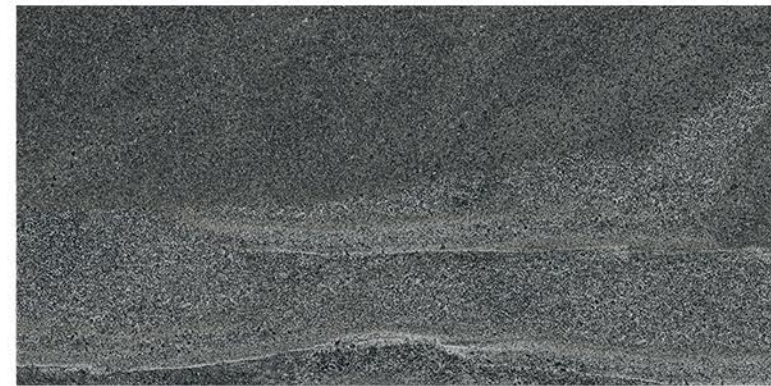


# GVT (MATT)

30x60cm



9095-LT



9095-DK





# GVT (MATT)

30x60cm



9106-LT



9106-DK



9107-LT



9107-DK



Phase-4



# GVT (MATT)

30x60cm



9108-LT



9108-DK



9109-LT



9109-DK



Phase-4



# GVT (MATT)

30x60cm



9110-LT



9110-DK



Phase-4

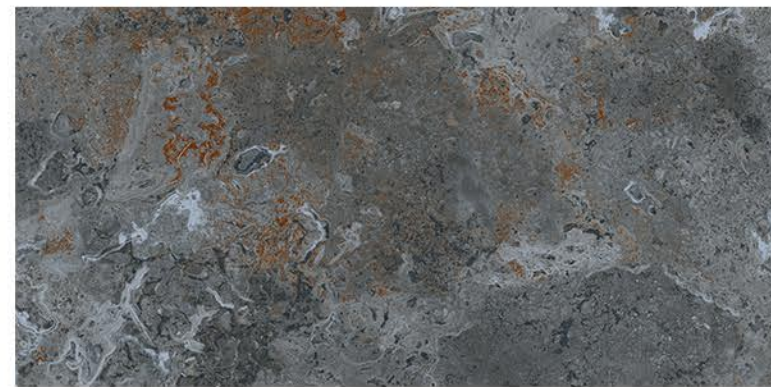


# GVT (MATT)

30x60cm



9113-LT



9113-DK



9114-LT



9114-DK



Phase-6



# GVT (MATT)

30x60cm



9122-LT



9122-DK



9123-LT



9123-DK



Phase-6



# GVT (MATT)

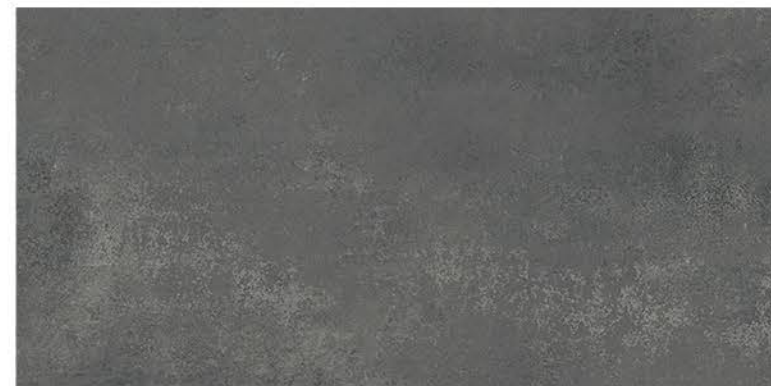
30x60cm



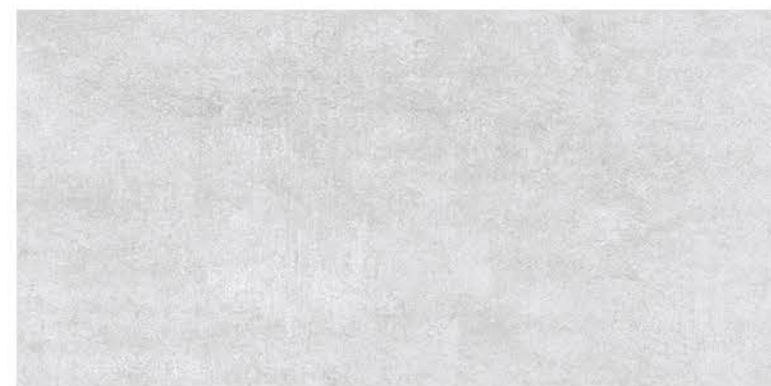
301-L



302-L



402-D



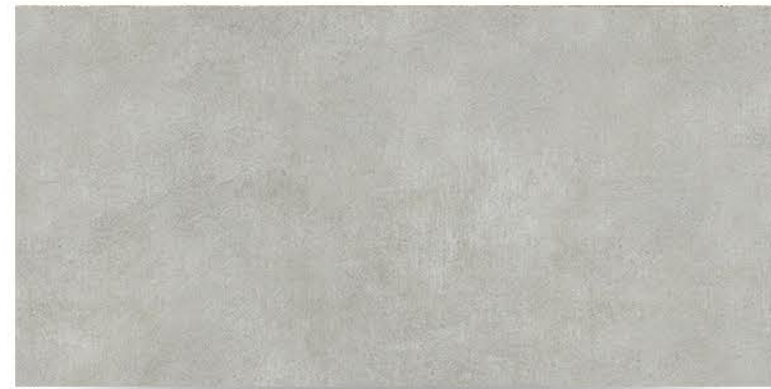
MARMO GRESS





# GVT (MATT)

30x60cm



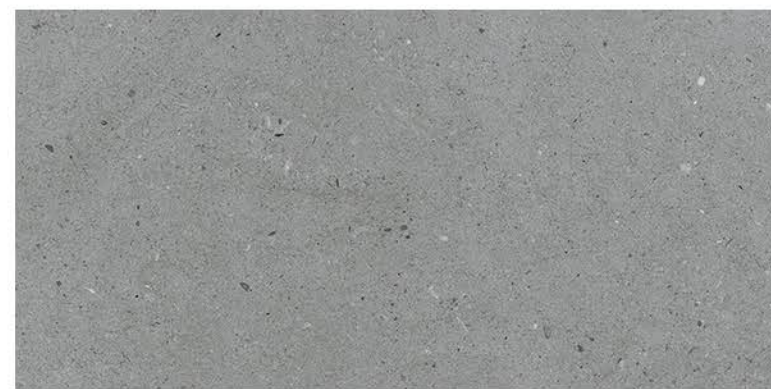
ALDO BLACK



ALDO IVORY



CALIFORNIA BIANCO



CALIFORNIA GREY



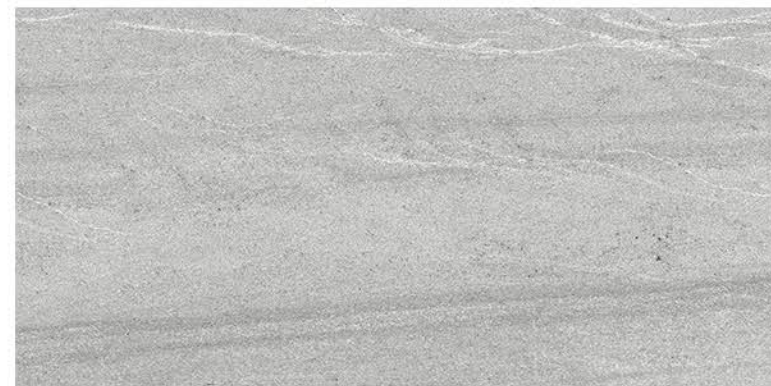


# GVT (MATT)

30x60cm



BAVARIAN LIGHT GERY



BAVARIAN DARK GERY





# GVT (MATT)

30x60cm



CEMENTARE ROMAN



CEMENTARE MANATEE





# GVT (MATT)

30x60cm



COSMO IVORY



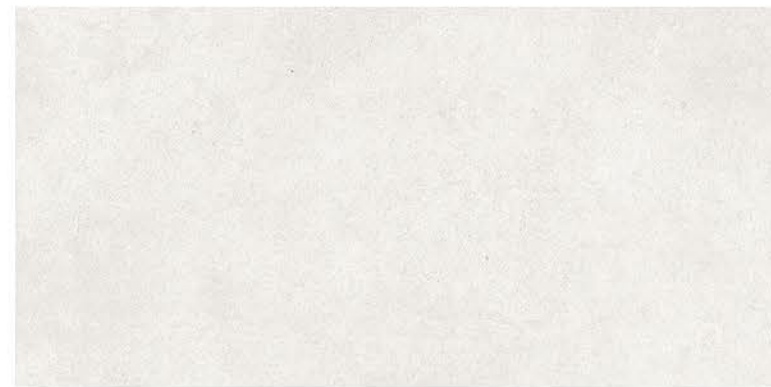
COSMO BEIGE





# GVT (MATT)

30x60cm



ENRICH BIANCO



ENRICH GRAFFITE





# GVT (MATT)

30x60cm



ROAST CREMA



PEROLA CREMA





# GVT (MATT)

30x60cm



PM 7077



PM 7078



PM 7079



PM 7067





# GVT (MATT)

30x60cm



PM 7073



PM 7074



PM 7075



PM 7076





# GVT (MATT)

30x60cm



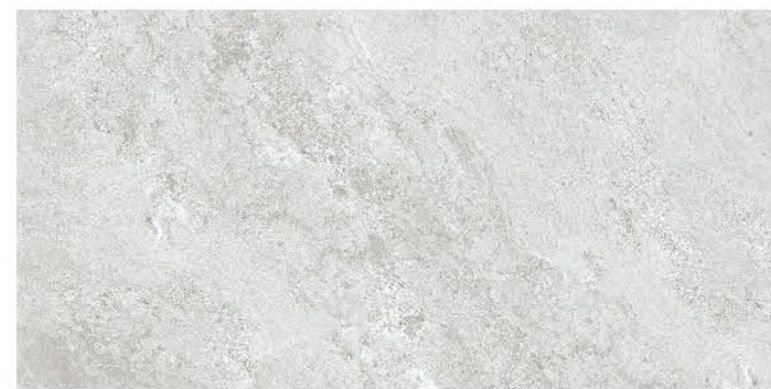
RENOIR GOLD



RENOIR BLACK



RENOIR GREY



RENOIR PEARL





# GVT (MATT)

30x60cm



SAND STONE BROWN



SAND STONE WHITE



SAND STONE GRAY





# GVT (MATT)

30x60cm



SPARK STONE WHITE



SPARK STONE GREY





# GVT (MATT)

30x60cm



STRIP IVORY



STRIP GREY





## Vitrified Wall Tiles

### PACKING DETAILS

S.No.	Dimensions (mm)	No. of Tiles/ Box	Coverage Area
1.	300x600	06	1.08 sq. m.

### TECHNICAL SPECIFICATIONS

S.No.	Property	Group B1a-ISO 13006 Annx. G.	Our Value	Test According to
1.	Deviation in length	± 0.6%	± 0.1%	ISO 10545-2
2.	Deviation in thickness	± 5%	± 4%	ISO 10545-2
3.	Straightness of sides	± 0.5%	± 0.1%	ISO 10545-2
4.	Rectangularity	± 0.6%	± 0.1%	ISO 10545-2
5.	Surface flatness	± 0.5%	± 0.15%	ISO 10545-2
6.	Surface quality (%)	A minimum of 95% of the tiles shall be free from visible defects that would impair the appearance of a major area of tile.	98% free from visible defects	ISO 10545-2
7.	Modulus of rupture	> 35 N/mm <sup>3</sup>	40 N/mm <sup>2</sup>	ISO 10545-4
8.	Breaking strength	> 1300 N	> 2000 N	ISO 10545-4
9.	Water absorption	< 0.5%	< 0.08%	ISO 10545-3
10.	Stain resistance	Stain proof	Stain proof	ISO 10545-14
11.	Chemical resistance	No damage	No damage	ISO 10545-13
12.	Thermal expansion	< 9 x 10 <sup>6</sup>	< 6 x 10 <sup>6</sup>	ISO 10545-8
13.	Moisture expansion	Nil	Nil	SO 10545-10
14.	Thermal shock resistance	No damage	No damage	ISO 10545-9
15.	Resistance to surface abrasion	Manufacturer to state abrasion class	PEI class 3-5	ISO 10545-7